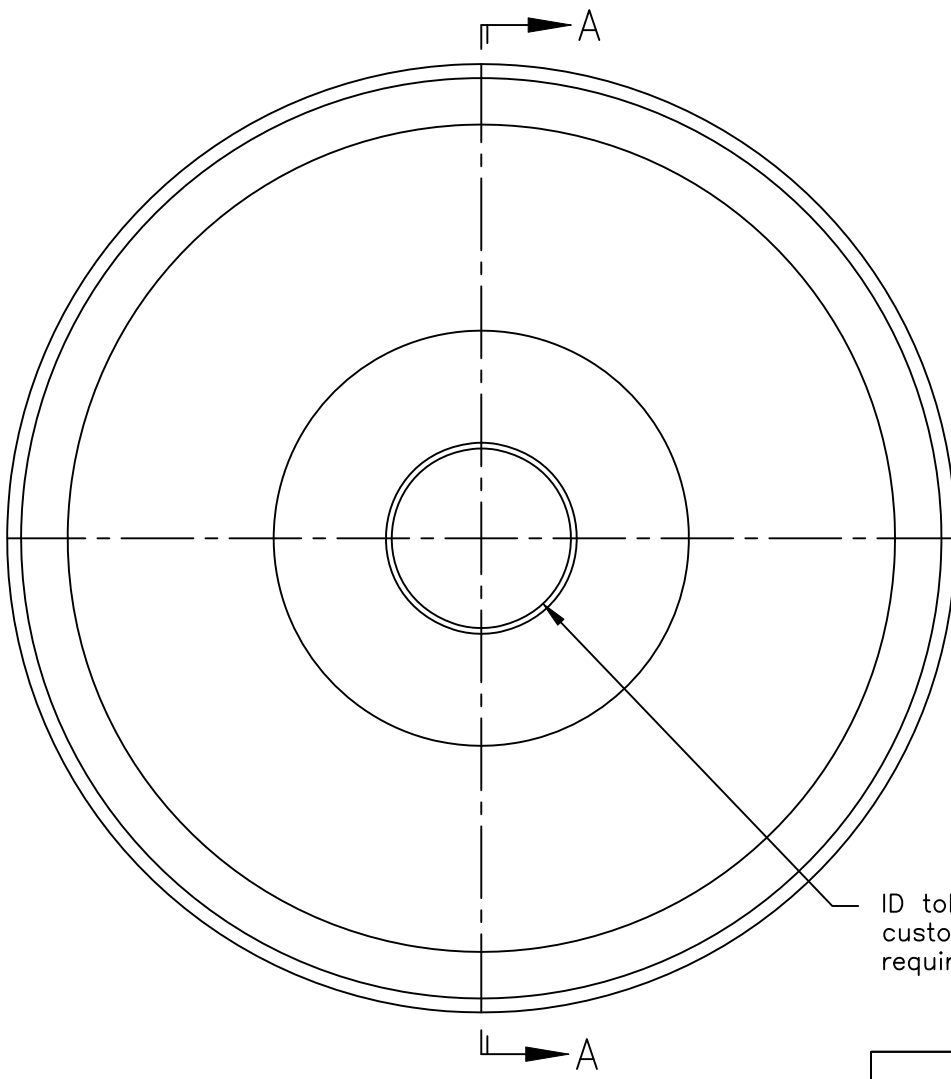
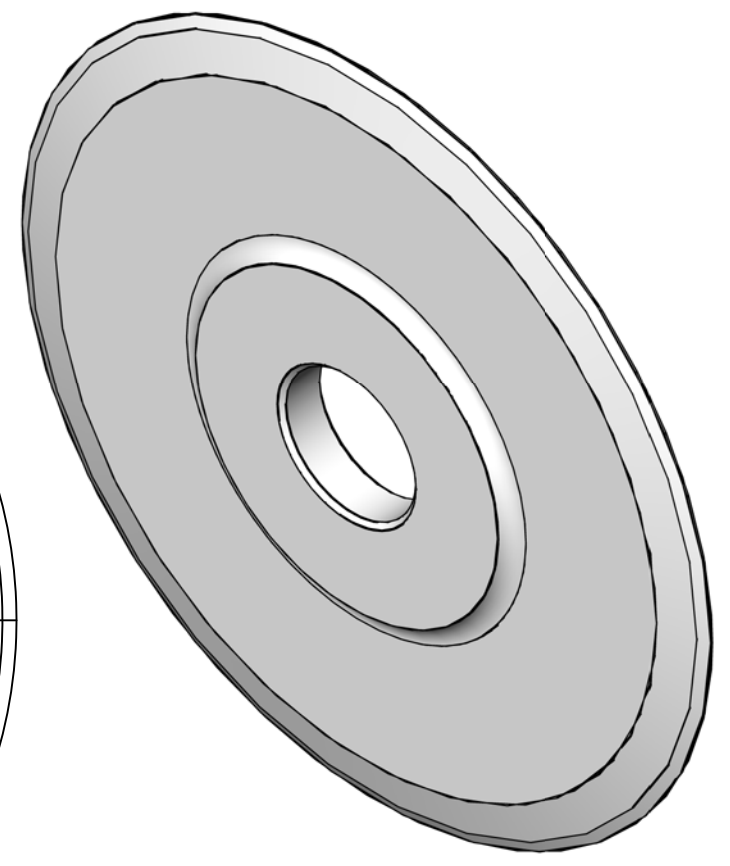


SECTION A-A



ID tolerance per customer requirements.



Website Drawing

- Unless noted otherwise, all dimensions are nominal.
- Circular knife is manufactured from [D2] material, heat treated to a hardness of [60-62] HRC.
- This part has No Black Oxide.

**PORTAGE KNIFE COMPANY**  
A DIVISION OF PORTAGE MACHINE CONCEPTS, INC. AKRON, OHIO (330) 784-0700

MANUFACTURER OF  
SCORE SLITTERS  
AND PERFORATORS

390-45-002-D2-NB Circular Knife

SIZE A	DWG NAME: 390-Unge.dwg
-----------	---------------------------

SCALE: NONE	DATE: 1/27/2025	DRAWN: D. MILLER	SHEET: 1
-------------	-----------------	------------------	----------

This print and the intellectual content is the property of Portage Machine Concepts, Inc. and must not be copied, transmitted or disseminated, in any way, without the written permission of Portage Machine Concepts, Inc.